



Odlum Brown

BC Cup Championships



ODLUM BROWN

Brent Poirier, CFA
Portfolio Manager

February 21st – 23rd, 2025

Mt Washington Nordic Site

INVITATION

Welcome Message from the Organizing Committee

Greetings Biathlon Friends:

The Vancouver Island Biathlon Club (VIBC) and the Comox Valley welcome you to the Odlum Brown BC Cup Championships, to be held from February 21st—23rd, 2025. Our Organizing Committee and volunteers have worked hard to help you enjoy your biathlon experience on Vancouver Island.

The Vancouver Island Biathlon Club is based in the beautiful Nordic ski area of Mt Washington Alpine Resort near Courtenay, B.C. Mt. Washington has over 55 km of undulating trails revealing spectacular views of Strathcona Provincial Park, the Strait of Georgia, and the Coast Mountains in the Sea to Sky Corridor. Training will take place on Friday, February 21st. However, if you'd like to explore our expansive trail network earlier, you can contact Mt. Washington Alpine Resort to obtain trail passes. If you are keen to take in some unofficial training at our range, be sure to get in touch with us through our club email at vibiathlonclub@gmail.com

Over the years there have been several updates to the area to accommodate you better. Raven Lodge, our Nordic Centre, has food and rentals available. Our range is also one of the largest fully-automated ranges in Canada, with 26 shooting lanes. We hosted several teams for the pre-Olympic training sessions in 2010, an IPC World Cup in 2007 and 2009 as well as a couple of BC Winter Games. We were very pleased to have hosted you for the BC Championships back in 2020 and are looking forward to hosting you again this season.

The Organizing Committee, volunteers, and families wish you the best of luck during this exciting weekend.

Sincerely,

Philip Douglas
Competition Lead
[Vancouver Island Biathlon Club](#)





ODLUM BROWN

Brent Poirier, CFA
Portfolio Manager

RUNDLE



STÜSSI SPORT
WE ARE NORDIC



Joel Formosa (Insulation)
Jake Shepherd Contracting LTD

**THRIFTY
FOODS**



Canada

G M A C

Greg MacKenzie + Associates Consulting Ltd.

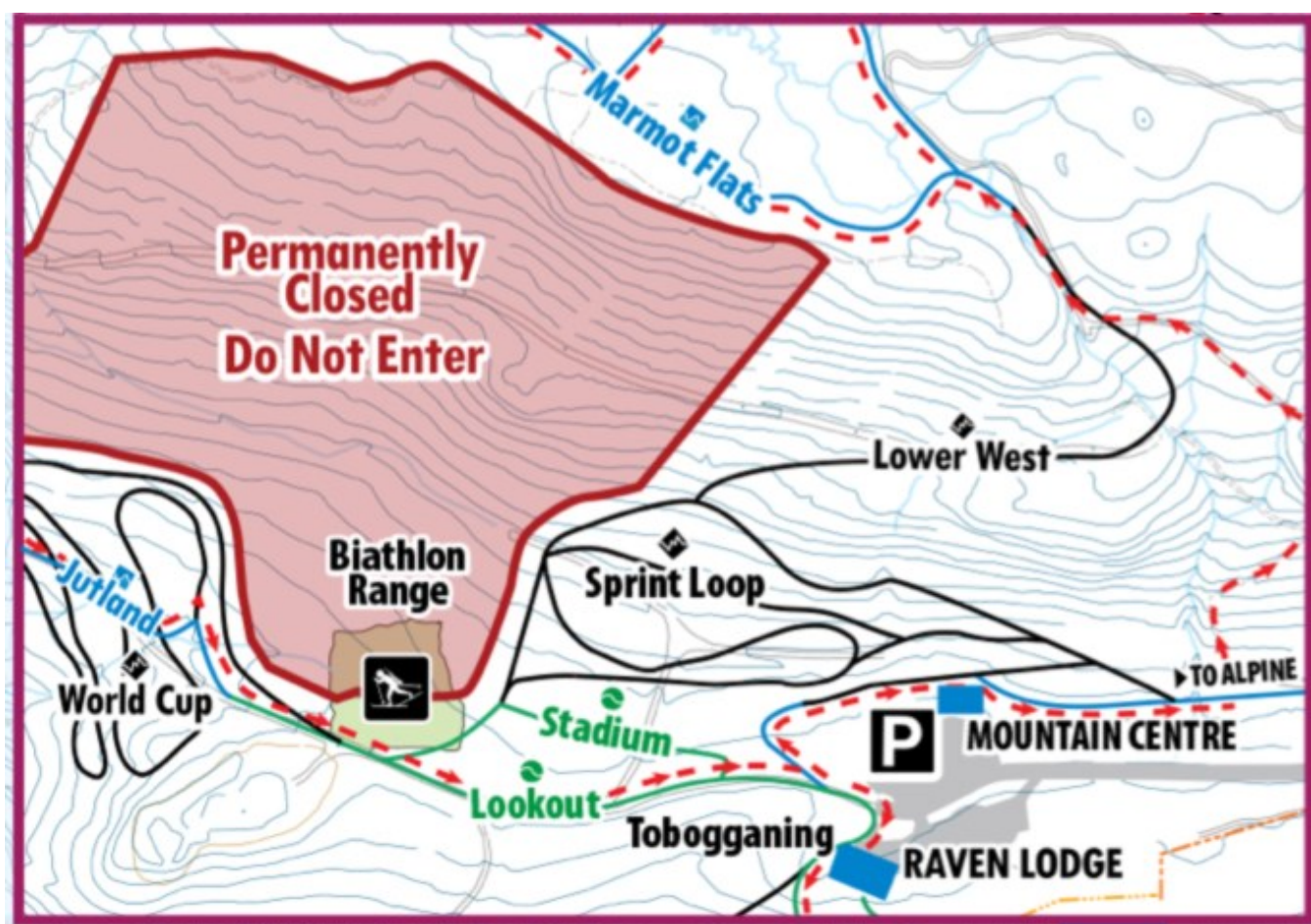


COMPETITION VENUE:

The event will be held at Vancouver Island Biathlon Club's biathlon site which is 350 metres West of Raven Lodge at Mt Washington's Nordic Site. Lunch will be available at the biathlon area, but must be pre-purchased on Zone4 when you register.

Raven Lodge is the Nordic ski lodge and can be searched on various Map Apps. Food and beverages can also be purchased there and there is access to washrooms and showers. Ski rentals, a retail shop for ski supplies, clothing and equipment are available inside. There are three ski forms for waxing, located outside the back of Raven Lodge. Parking is limited and parking on the road is prohibited. There is additional parking at the Hawk Chair, and you can ski or walk in from there.

Team Captains' meeting will be held [online](#) at 5pm on the 21st, and a WhatsApp [link](#) will connect you to the Competition Committee.



GETTING THERE:

The venue is approximately a 40 minute drive from Comox Airport. There are shuttles available through [Ambassador Transport](#) For group transportation costs contact them directly.

Mount Washington provides a [bus service](#) from several locations in the Comox Valley.

Ferries arrive in Nanaimo at Departure Bay from Horseshoe Bay (90 minute drive) and Duke Point from Tsawwassen (100 minute drive) [BC FERRIES](#) Bus link [ISLAND LINK](#)

Accommodation:

Accommodation on the mountain books up early so don't delay! The first 2 websites have places in the Nordic area, Slopeside is in the Alpine area, there are also some VRBO places

[Mile High Accommodations](#)

[Cona Getaways](#) info@conagetaways.com

[Mt Washington Accommodations](#)

There is a store on the mountain but it has limited supplies so we suggest you purchase food before driving up the mountain.

In Courtenay: [The Westerly \(Best Western Hotel\)](#) P: (250) 338-7741 / 1 (800) 668-7797

Book under "Vancouver Island Biathlon" prior to January 20th to get a reduced rate at \$161/night+tax for a 2 bed Queen room. This rate includes a full hot buffet breakfast, parking, and Wi-Fi. The cancellation policy is free to cancel up to 24 hours prior to arrival.

In Cumberland: [Riding Fool Hostel](#)

REGISTRATION:

All registration will be done through [Zone 4](#) Registration will open **January 10th, 2025** and will close at **midnight February 14th, 2025**. Payment must be made by credit card.

ENTRY FEES:

\$45.00 per athlete per BC Cup competition

\$35.00 per athlete per competition in the U11, Dev1, or Dev1 Ecoaims categories

All registered members of Biathlon Canada or US Biathlon are eligible to compete in the classes as stipulated in this invitation. Optical Ecoaim-only athletes may compete with a [Recreation Membership](#).

CANCELLATION POLICY:

There are no refunds if a competitor does not show up for the competition. Zone 4 processing fees will not be refunded for any reason. If a competitor withdraws at least one week prior to the event (by February 14th, 2025) they will be refunded less an administration fee of \$10 per Competition. If the event is cancelled one week ahead (before February 14th, 2025) then the registration fees will be refunded in full. If unforeseen circumstances cause cancellation closer to the event, the organizers may retain entry fees sufficient to ensure no loss against monies already spent.

TRAIL PASSES:

Will be included in the fees for **Saturday and Sunday only**. Please purchase a trail pass for training, while registering on Zone4, if you intend to ski Friday. There will be a list of registrants at Raven Lodge, where your trail passes can be collected.

WAX Service Available:

Our local cross country club, Strathcona Nordics, will happily wax your skis for a \$10 fee. They will be located outside our Biathlon Hut. Skis must be clean and labelled with athlete's name and club, and submitted by 3pm the day prior. Their wax protocol is to spray with base cleaner and wipe with a shop cloth to remove dirt, roto with two nylon bristle brushes, apply and buff Master wax, add structure if needed, and brush with a finishing brush.

RULES:

The competition will be conducted in accordance with the current IBU Event and Competition Rules, and the [Biathlon BC August 2024 Hosting Policy](#). The [Biathlon BC Firearms Safety Policy](#) and [Biathlon BC Wax Policy 2023](#) will also be in effect.

Any competitor carrying a .22 cal rifle must have a current PAL or Minor's carrying permit.

RANGE POLICIES FOR VIBC RANGE: [Range Rules](#) [Range Policy](#)

Rifles are not encouraged in Raven Lodge. If they are taken inside they must remain locked and in a soft cover or hard case and not left unattended. If needed, there is a safe location inside the white seacan at the range to work on your rifles. Rifles in hard cases must be cased and uncased in the seacan in a safe manner or on the shooting mat.

RIFLE IMPORT REGULATIONS:

Teams and individual competitors from outside of Canada must declare their rifles at the Canadian border, complete the [necessary documentation](#), and pay the required fees when bringing rifles and ammunition into Canada. All athletes must register their own rifles and pay the applicable fee. Refer to guidelines on the Canadian Government website at: www.cbsa-asfc.gc.ca/import/iefw-iefw-eng.html

WEATHER INFORMATION: [SNOW FORECAST](#) [Mt WASHINGTON RESORT REPORT](#)

[NORDIC WEBCAM](#) [YR.NO](#)

Banquet:

The banquet will be held at 1730 Saturday evening, at Raven Lodge, up Mt Washington. Seating is limited to 140 guests, so please book as soon as possible. Tickets are \$40/person, purchased during your Zone4 registration. Awards will be held at the banquet.

The event is planned to have live music, a guest speaker and is scheduled to conclude before 8:30pm.

Menu:

Pasta, Chicken, Mashed Potato, Green Salad, and Dinner rolls. A bar service will be available.

EVENT CONTACTS:

Competition Lead —Phil Douglas 604-722-0566 vibiathlonclub@gmail.com

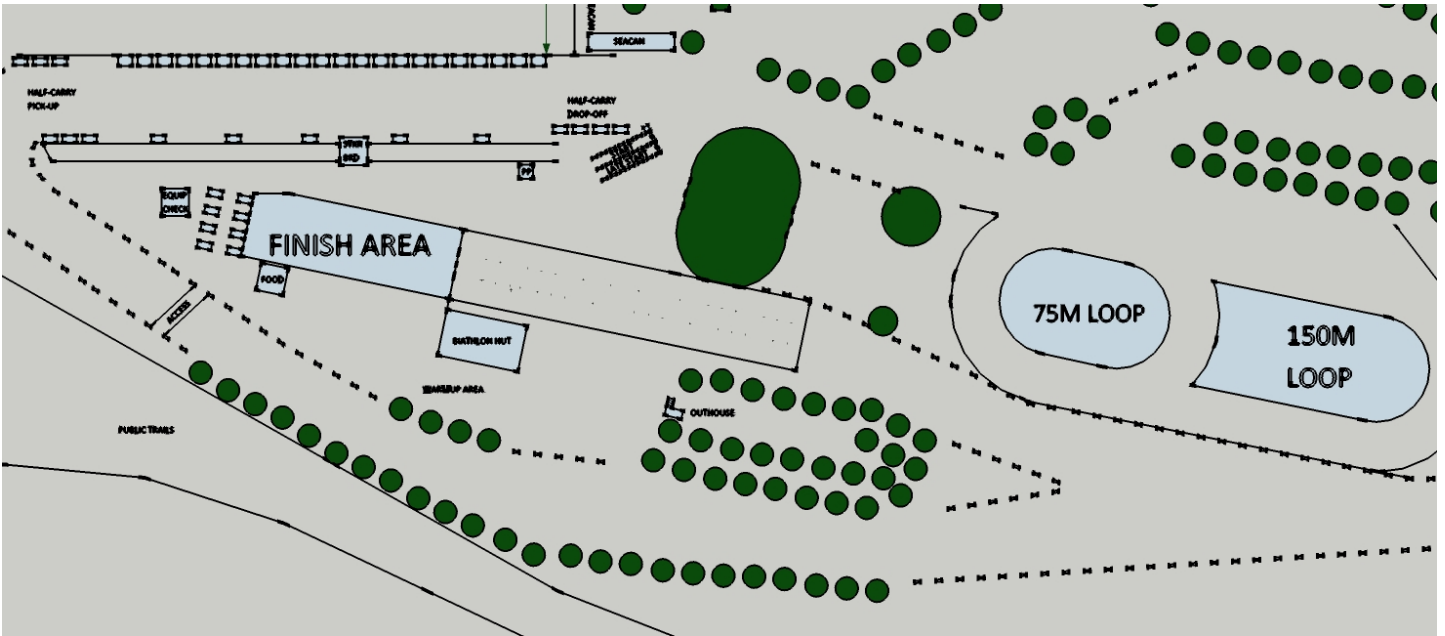
Competition Secretary— Jonathan Kerr 250-702-5547 vibcprogrammer@gmail.com

Doug Robinson yvr_doogie@hotmail.com

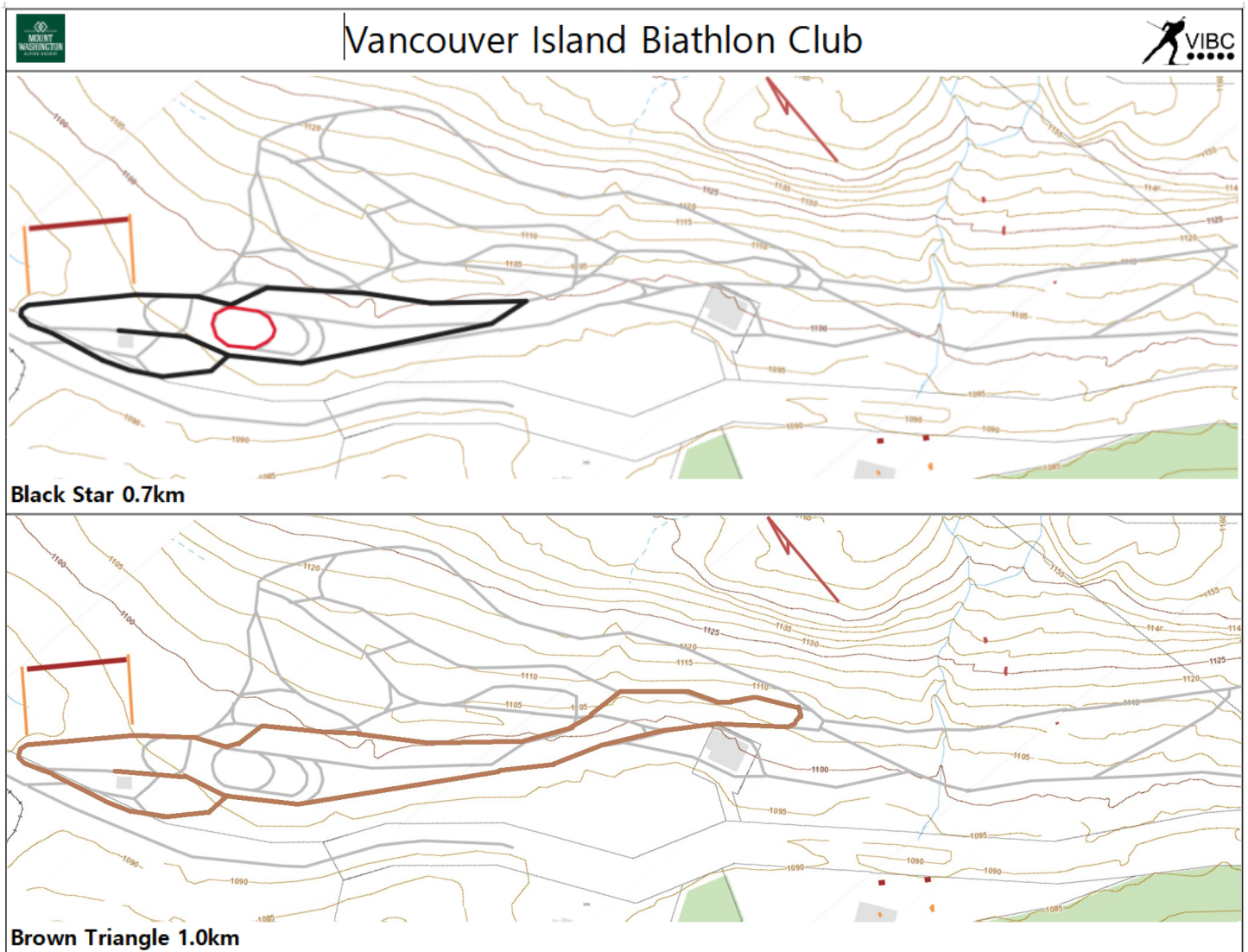
Competition Organizing Committee:

Competition Lead	Phil Douglas
Technical Delegate	John Neumann
Range Lead	Rick Holmes / Earl Morton
Range Officials Lead	Christy Wagner / Yvonne Visser
Timing Lead	Rob Schnider / Doug Robinson / Terry Lum
Course Lead	Blair Pettis / Michael Cullen
Stadium Lead	Alex Gauld / Glenn Rupertus
Competition Secretary	Doug Robinson / Jonathan Kerr
Volunteer Coordinator	Jonathan Kerr / Vicki Erikson
Hospitality Lead	Kat Robertson
Finance and Sponsors	Vicki Erikson / Gary Tate

Stadium Overview

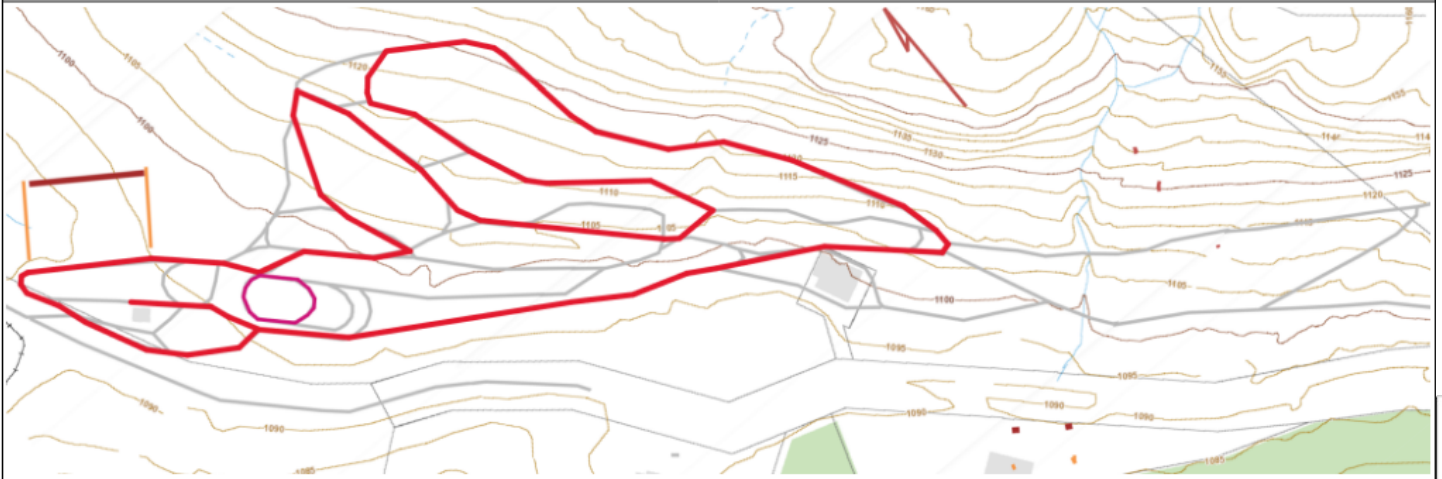


Courses [\(weblink\)](#)

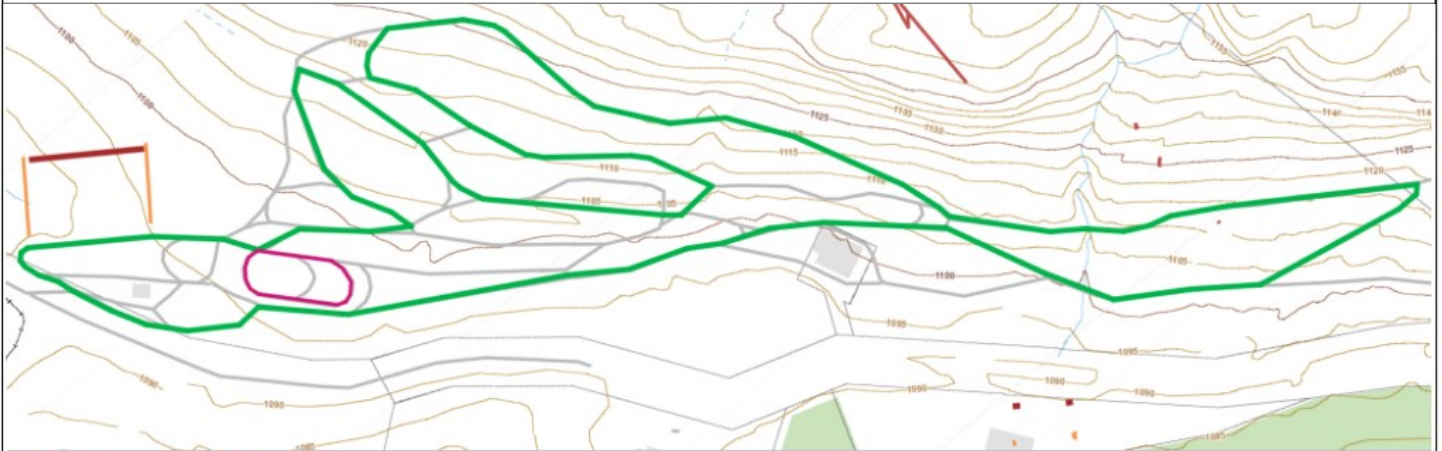




Orange Cross 1.5km



Red Diamond 2.0km



Green Clover 2.5km



Yellow Circle 3.0km

EVENT SCHEDULE: Times may vary

Friday February 21st 1200 to 1500 **Mixed Unofficial Training**

1700 **Team Captains' meeting online via Zoom**

Saturday February 22nd **Individual** *-Short format Individual for Open Men/Women*

0800 **Range and Course Setup**

0900 **Bib Pick up** in the Biathlon Hut

0945 **Equipment Check opens**

1000 **Range open for Zero, all .22cal athletes**

1050 **Range Closed, Half-carry rifles on racks, Equipment check closes**

1051 **Opening Ceremony and National Anthem**

1100 **Competition Start (estimated completion time 1245)**

1300 **Range open for Zero, U11 and Optical Ecoaims categories**

1350 **Range Closed**

1400 **Ecoaims competitions**

1500 **Ecoaims competitions Complete**

1600 **Range closed**

1730 Banquet and Awards

Sunday February 23rd **Mass Start** *Start list based on previous day's ski speeds*

0730 **Range and Course Setup**

0815 **Bib Pick up** in the Biathlon Hut

0845 **Equipment check opens**

0900 **Range open for Zero, all athletes**

0950 **Range Closed, Half-carry rifles on racks, Equipment check closes**

1000 **Mass Starts Begin**

1145 **Ecoaims 20min zero**

1230 **Estimated end of competition**

Award Ceremony following the last Competition

Athletes will compete on the following courses:

3 km **Yellow Circle** 2 km **Red Diamond** 1.0 km **Brown Triangle**
 2.5 km **Green Clover** 1.5 km **Orange Cross** 0.7 km **Black Star**

Category	Age	INDIVIDUAL <i>Short format Open Men and Women</i> Distance—Shooting (penalty)	MASS START Distance—Shooting (penalty)
Men	22+	15 km PSPS Yellow (45sec)	15 km PPSS Yellow (150m loop)
Women	22+	12.5 km PSPS Green (45sec)	12.5 km PPSS Green (150m loop)
Jr Men	19-21	15 km PSPS Yellow (60sec)	12.5 km PPSS Green (150m loop)
Jr Women	19-21	12.5 km PSPS Green (60sec)	10 km PPSS Red (150m loop)
Youth Men	15-18	12.5 km PSPS Green (45sec)	10 km PPSS Red (150m loop)
Youth Women	15-18	10 km PSPS Red (45sec)	7.5 km PPSS Orange (150m loop)
Adult 4	50+	12.5 km PSPS Green (30sec)	10 km PPSS Red (75m loop)
Adult 4	35-49	12.5 km PSPS Green (30sec)	10 km PPSS Red (75m loop)
Adult 4	17-34	12.5 km PSPS Green (30sec)	10 km PPSS Red (75m loop)
Adult 3	50+	10 km PSPS Red (30sec)	7.5 km PPSS Orange (75m loop)
Adult 3	35-49	10 km PSPS Red (30sec)	7.5 km PPSS Orange (75m loop)
Adult 3	17-34	10 km PSPS Red (30sec)	7.5 km PPSS Orange (75m loop)
Adult 2	50+	7.5 km PSPS Orange (30sec)	5 km PPSS Brown (75m loop)
Adult 2	35-49	7.5 km PSPS Orange (30sec)	5 km PPSS Brown (75m loop)
Adult 2	17-34	7.5 km PSPS Orange (30sec)	5 km PPSS Brown (75m loop)
Adult 1 (.22cal)	50+	7.5 km PPPP Orange (30sec)	5 km PPPP Brown (75m loop)
Adult 1 (.22cal)	35-49	7.5 km PPPP Orange (30sec)	5 km PPPP Brown (75m loop)
Adult 1 (.22cal)	17-34	7.5 km PPPP Orange (30sec)	5 km PPPP Brown (75m loop)
Adult 1 optical	50+	7.5 km PPPP Orange (30sec)	5 km PPPP Brown (75m loop)
Adult 1 optical	35-49	7.5 km PPPP Orange (30sec)	5 km PPPP Brown (75m loop)
Adult 1 optical	17-34	7.5 km PPPP Orange (30sec)	5 km PPPP Brown (75m loop)
U17Boys 1/2carry	U17	7.5 km PSPS Orange (30sec)	7.5 km PPSS Orange (75m loop)
U17Girls 1/2carry	U17	7.5 km PSPS Orange (30sec)	7.5 km PPSS Orange (75m loop)
U17Boys Prone	U17	8km PPP Red (30sec)	8 km PPP Red (75m loop)
U17Girls Prone	U17	8km PPP Red (30sec)	8 km PPP Red (75m loop)
DEV2 (.22cal)	U17	6 km PPP Orange (30sec)	6 km PPP Orange (75m loop)
DEV2 optical	U17	6 km PPP Orange (30sec)	6 km PPP Orange (75m loop)
DEV1 (.22cal)	U17	4 km PPP{rest} Brown (30sec)	4 km PPP{rest} Brown (75m loop)
DEV1 optical	U17	4 km PPP{rest} Brown (30sec)	4 km PPP{rest} Brown (75m loop)
U11 Optical only	U11	2.8km PPP Black (30sec)	2.8km PPP Black (75m loop)
Sit-ski and VI		4 km PPP Brown (30sec)	4 km PPP Brown (75m loop)